



S.C. Homeland Security

SC Goal- Detect, Prepare, Prevent, Protect and Respond To Any Terrorist Act

Gov. Jim Hodges' Executive Order 2001-34 17 Oct 2001



Gov. Mark Sanford

System Under Review



Director Reggie Lloyd
Counter Terrorism Coordinator
State Law Enforcement Division
803-896-7001 www.sled.state.sc.us



SC Homeland Security Council

- SLED Chief, Chair
- State Attorney General
- US Attorney
- State Adjutant General
- Police Chiefs'/ Sheriffs' Assoc
- EMS Association
- Emergency Management Assoc
- Nat Emer Numbers Assoc
- SC DOT
- Department of Public Safety
- American Red Cross
- SC Chamber of Commerce
- SCEMD
- President Pro Tem of Senate
- Speaker of House of REPs
- Super. Of Education
- State Fire Marshal
- Fire Chiefs'/ Firemen's Assoc
- SC DHEC
- Budget & Control Board CIO
- SC DNR
- SC Dept of PPP
- USCG Commander
- **4-Regional Coordinating Councils (LowCountry: 10 Counties)**

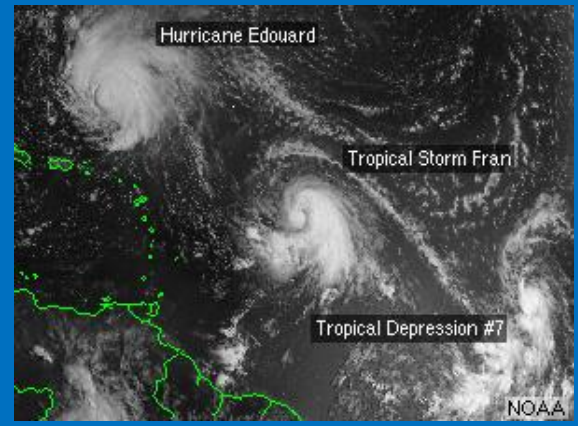
Under Revision by SLED New- SC
Office of Homeland Security





SC Hurricane Threats

Ancient Mayan Indian god....**HURAKAN**

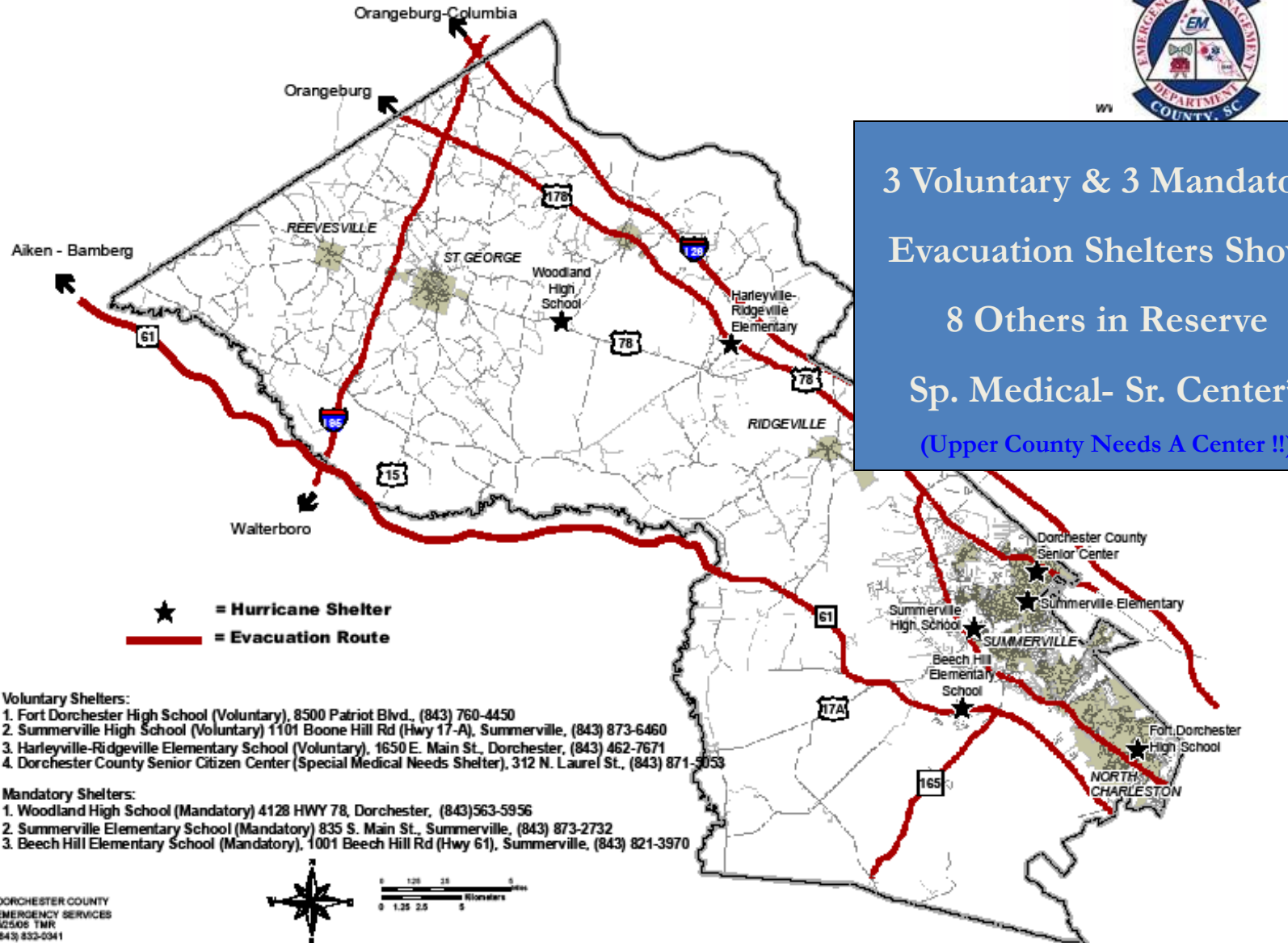


*Hugo's Category?
....depended on Your location!*

Saffir-Simpson Scale

CAT	WIND [M]	WIND [K]	PRESS [In]	PRESS [Mb]	SURGE	DAMAGE
1	74-95	64-83	>29.94	>979	4 to 5	Minimal
2	96-110	84-96	28.5-28.91	965-979	6 to 8	Moderate
3	111-130	97-113	27.91-28.47	954-964	13-17	Extensive
4	131-155	114-135	27.17-27.88	920-944	13-18	Extreme
5	155-230	136-200	<27.17	<920	18+	Catastrophic

DORCHESTER COUNTY HURRICANE EVACUATION ROUTES



3 Voluntary & 3 Mandatory
Evacuation Shelters Shown
8 Others in Reserve
Sp. Medical- Sr. Center*
(Upper County Needs A Center !!)

Voluntary Shelters:

1. Fort Dorchester High School (Voluntary), 8500 Patriot Blvd., (843) 760-4450
2. Summerville High School (Voluntary) 1101 Boone Hill Rd (Hwy 17-A), Summerville, (843) 873-6460
3. Harleyville-Ridgeville Elementary School (Voluntary), 1650 E. Main St., Dorchester, (843) 462-7671
4. Dorchester County Senior Citizen Center (Special Medical Needs Shelter), 312 N. Laurel St., (843) 871-5053

Mandatory Shelters:

1. Woodland High School (Mandatory) 4128 HWY 78, Dorchester, (843)563-5956
2. Summerville Elementary School (Mandatory) 835 S. Main St., Summerville, (843) 873-2732
3. Beech Hill Elementary School (Mandatory), 1001 Beech Hill Rd (Hwy 61), Summerville, (843) 821-3970

DORCHESTER COUNTY
EMERGENCY SERVICES
52506 TNR
(843) 832-0341

Shelter Program Possible due to Partnership with School Districts & ARC

SC Tornado Threats



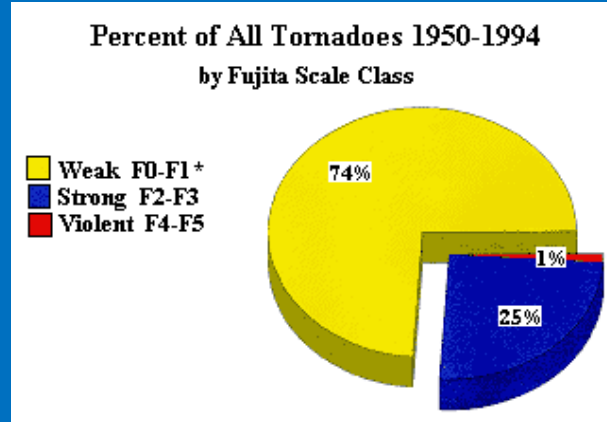
28 Mar 84 Outbreak
22 Tornadoes
57 Deaths
>1200 Injuries
\$200 Million Damages

South Carolina

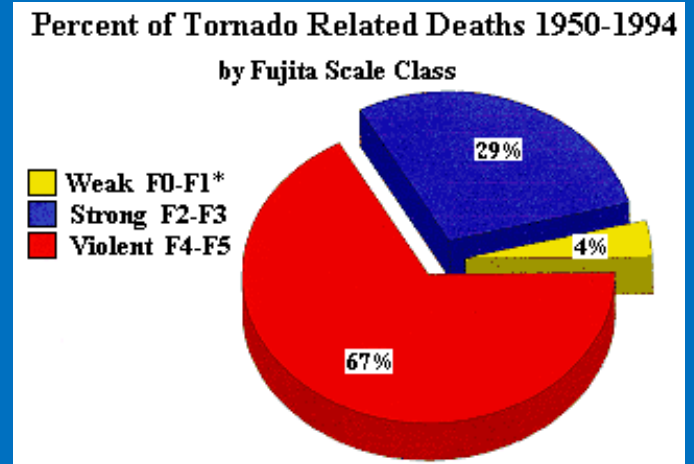
• Severe Thunder Storms Can Produce High Winds, Lightening and Hail and Tornadoes

Average Statistics:

- Occur Between 3-9 PM
- Stay on the Ground Only 5-10 Minutes
- Speed: Stationary to >70 MPH
- Winds Can Exceed 300 MPH (F-5)
- Travel in any direction but, North East Direction common
- Path Can Be A Mile Wide or as little as 50 ft
- Mostly March thru May in our area but, Anytime of Year is possible



Branchville Tornado 3-08



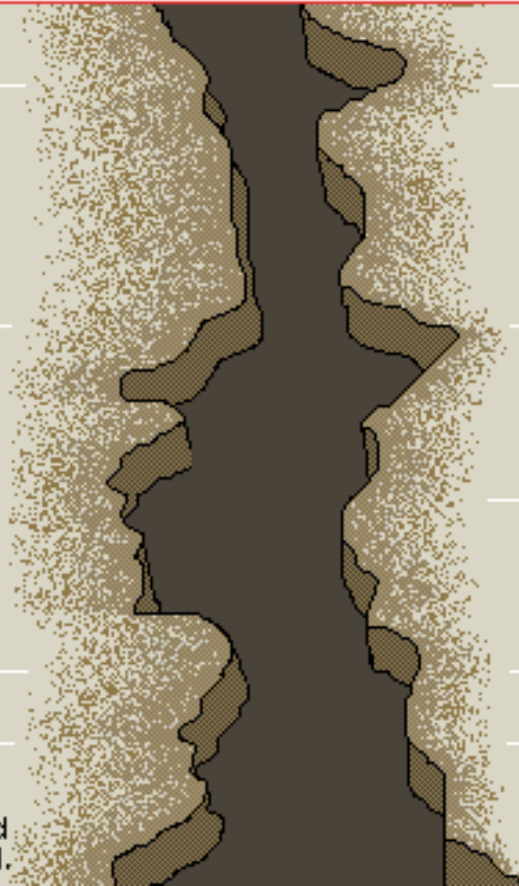
Risk: 27% of a Tornado Strike Each Year in County

SC Earthquakes

1883-1902

1935

Modified Mercalli Scale	Richter Scale
I. Felt by almost no one.	2.5 Generally not felt, but recorded on seismometers.
II. Felt by very few people.	3.5 Felt by many people.
III. Tremor noticed by many, but they often do not realize it is an earthquake.	4.5 Some local damage may occur.
IV. Felt indoors by many. Feels like a truck has struck the building.	6.0 A destructive earthquake.
V. Felt by nearly everyone; many people awakened. Swaying trees and poles may be observed.	7.0 A major earthquake.
VI. Felt by all; many people run outdoors. Furniture moved, slight damage occurs.	8.0 and up Great earthquakes.
VII. Everyone runs outdoors. Poorly built structures considerably damaged; slight damage elsewhere.	
VIII. Specially designed structures damaged slightly, others collapse.	
IX. All buildings considerably damaged, many shift off foundations. Noticeable cracks in ground.	
X. Many structures destroyed. Ground is badly cracked.	
XI. Almost all structures fall. Bridges wrecked. Very wide cracks in ground.	
XII. Total destruction. Waves seen on ground surfaces, objects are tumbled and tossed.	



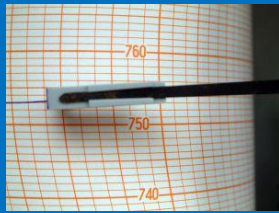
1886



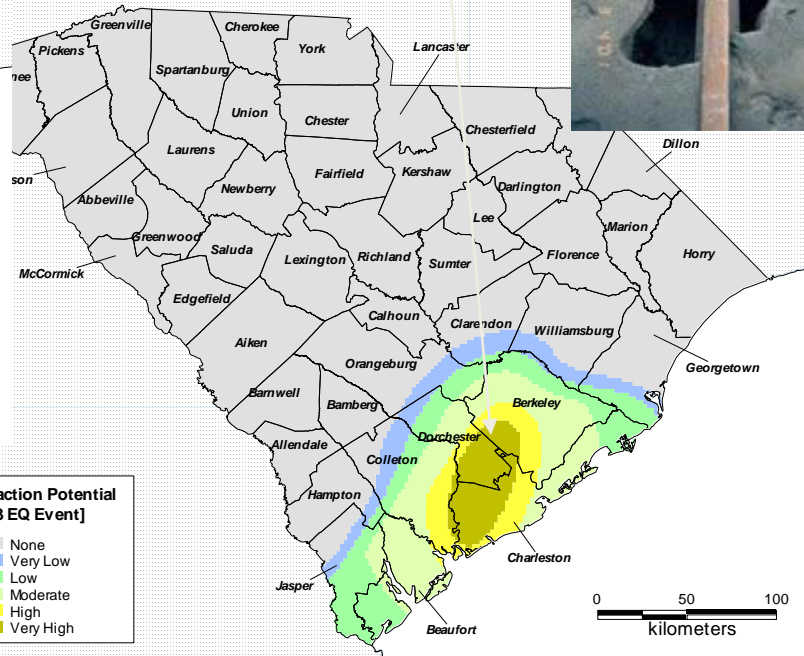
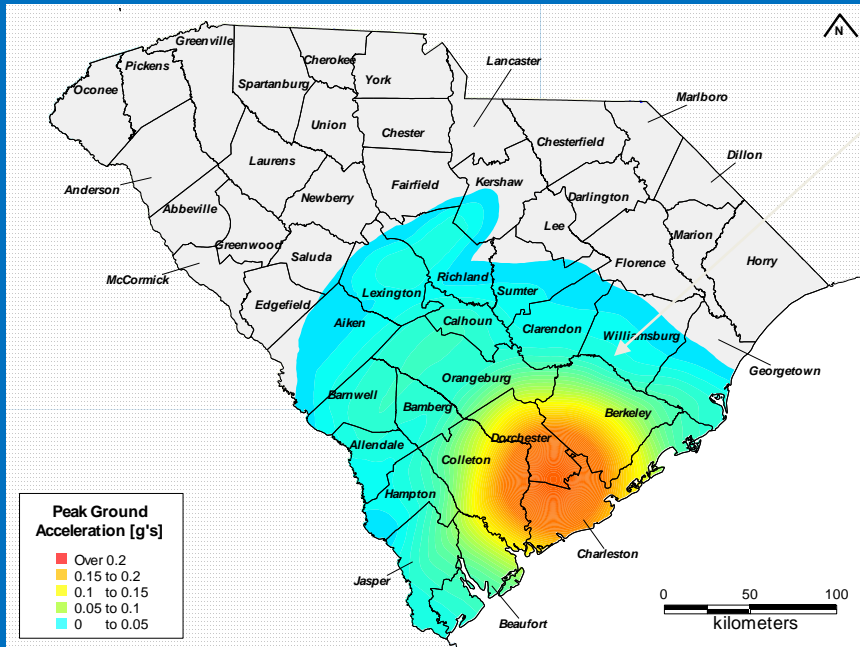
Chang Heng's Earthquake Weather Crock
132 AD



SC Earthquakes



6.3 (R) Quake Effects Shown



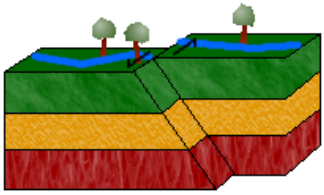
Area of Impact- Ground Shaking

Area of Impact- Ground Failure & Liquefaction

6.3 > 1 million tons TNT
 7.3 > 32 million

8.0 San Francisco 1906 = 1 billion tons of TNT !

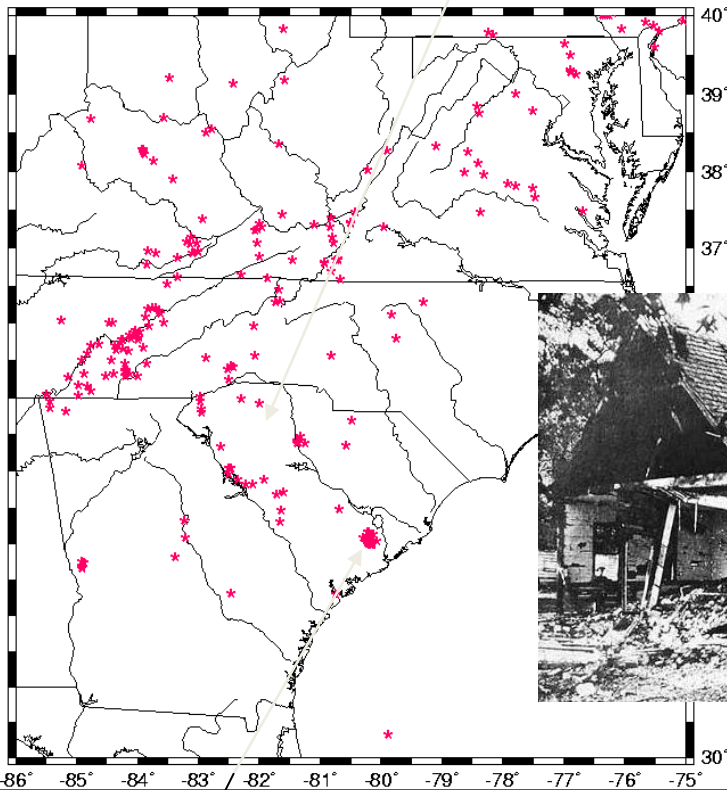
SC Earthquakes



Strike-Slip Fault

2006/7 Activity

Southeast Earthquakes 1973 - 2000



Middleton Place-Summerville Seismic Zone



Future USC-Dorchester County EOC Joint Project...?